

# Murderdolls Tie Dress Sewing Pattern Instructions

Size Chart							
	Body Measurements			Finished Garment Measurements			
	bust	waist	hips	bust	waist	hips	length
xs	30-32	23-25	32-34	33	28	35.2	31.6
s	32-34	25-27	34-36	35	29.2	37.3	31.2
m	34-36	27-29	36-38	37	31.2	39.3	32.9
l	36-38	29-31	38-40	39	33.1	41.3	33.5
xl	38-40	32-34	40-42	41	35.6	43.4	34.1
xxl	40-42	34-36	42-45	43	37.5	45.4	34.7

Note: I don't know why the waist ease goes down so much as the sizes go up, but I feel like 3" is a little much for something in a fitted shape made of stretch fabric anyway? How far the waist goes in at the sides is also an easy thing to change if you want to. For example, if you are, or would like to look, shaped more like Joey than this model.



## Materials

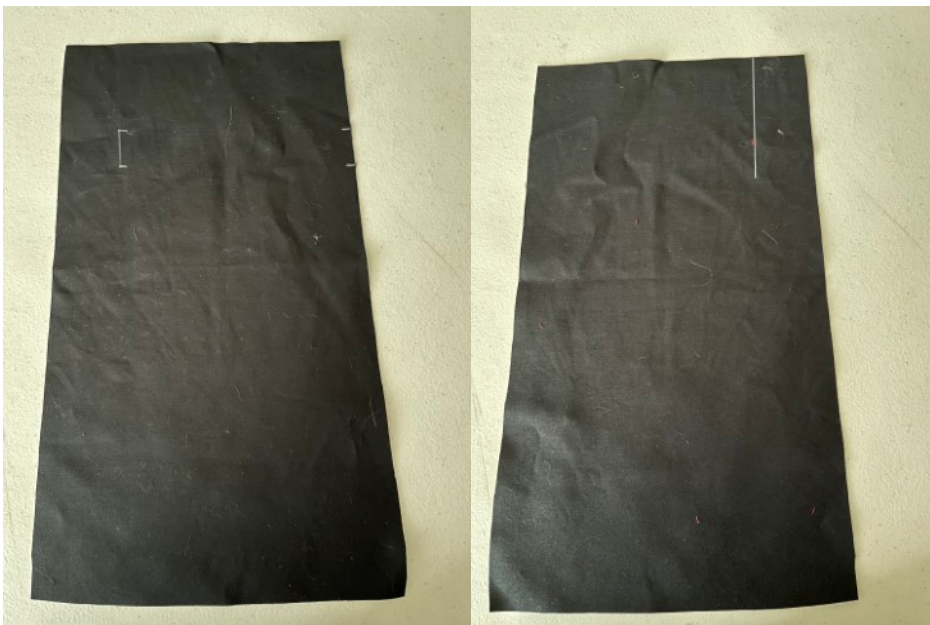
- Black stretch cotton fabric (at 48" width: XL+XXL need 2 yards, M+L need 1-7/8, and XS+S need 1-5/8)
- Plain red cotton, 1/3 yard at 45" width
- Very light interfacing for the collar and button placket (don't use white, or it'll show when you cut the buttonholes)

- Black and red all purpose thread
- Heavier red thread for topstitching
- Appropriate needles
- Buttonhole elastic, less than a foot
- 2 7/16" (11mm) (or any size that fits through your elastic, really) clear or black buttons
- 8 3/4" black buttons
- 2 4-1/2" zippers
- Zipper foot



The buttons.

All seams are serged after they're sewn, except the collar seams (unnecessary), and the side seams (serged individually before sewing to be able to be pressed open at the hems). All seam allowances are 3/8". Mark darts, vertical pleat stitching lines, and the stitch-to marks by the plackets on the wrong side, and everything else on the right side.



Strap placement markings on the right side, and pleat stitching line on the wrong side.

### Straps

- Fold long edges in to center and press
- Fold the short end of the front straps in 1/2" and press
- Put together each black piece with a red one, with the folded over edges inside, and topstitch close to the edge (long edges only on side straps, long edges and folded short edge on front straps)
- Fold and stitch side straps around middle bar of strap slides
- The remaining raw end of the side straps will get serged with the side seam later. I opted to serge the raw end of my front straps, but on the original they weren't, and weren't badly frayed after clearly being washed many times



### Epaulettes

- Sew one black and one red right sides together
- Clip corners, turn right side out, and press



- Topstitch close to the edge with red thread
- Stitch buttonholes in red thread (I used all purpose because it looked better than the topstitching thread with my machine)

### **Right placket**

- Interface placket
- Sew placket facing to placket, right sides together
- Fold facing back around to wrong side of placket and press
- Sew right side of placket to wrong side of right bodice front
- Stitch top edge from center to marking, clip seam allowance at marking, turn placket right side out and press
- Topstitch at 1/4"



- Use buttonhole placement template to mark buttonholes
- Stitch buttonholes in red thread (it would've been much less annoying to maneuver if I'd done it at this step instead of the very end)

### **Left placket**

- Press center edge 3/8 to wrong side
- Fold right sides together along fold line
- Stitch from fold to mark
- Clip seam allowance to allow turning right side out
- Press
- This is also topstitched at 1/4" from the edges of the placket, but I was having issues with the topstitching thread in the bobbin, so I did it from the right side, and the inner line of stitching was 7/8" from the edge

### **Darts**

- Sew darts in bodice fronts and press to center

### **Zippers**

- On the original, the ends of the zipper tape are folded under. I just cut mine and sealed the ends with a lighter.
- The markings are where the zipper teeth go. Pulls go toward the armhole. Topstitch all the way around, close to the edge.



### **Back**

- Sew center back seam
- Press to left and topstitch close to the edge, and 1/4" away from that
- Sew back darts and press toward sides

### **Shoulder seams**

- Sew and press toward back

### **Collar**

- Interface black piece
- Stitch the two pieces right sides together on the longest side and ends
- Clip corners, turn right side out, press



### Attach collar

- Sew RED SIDE right sides together with bodice (ask me why that's in all caps...)
- Fold black side under and topstitch (this was originally done with the topstitching thread, but I did it with regular black thread because it was easier and nobody's ever gonna see it)
- Topstitch 1/4" from edge

### Sleeves

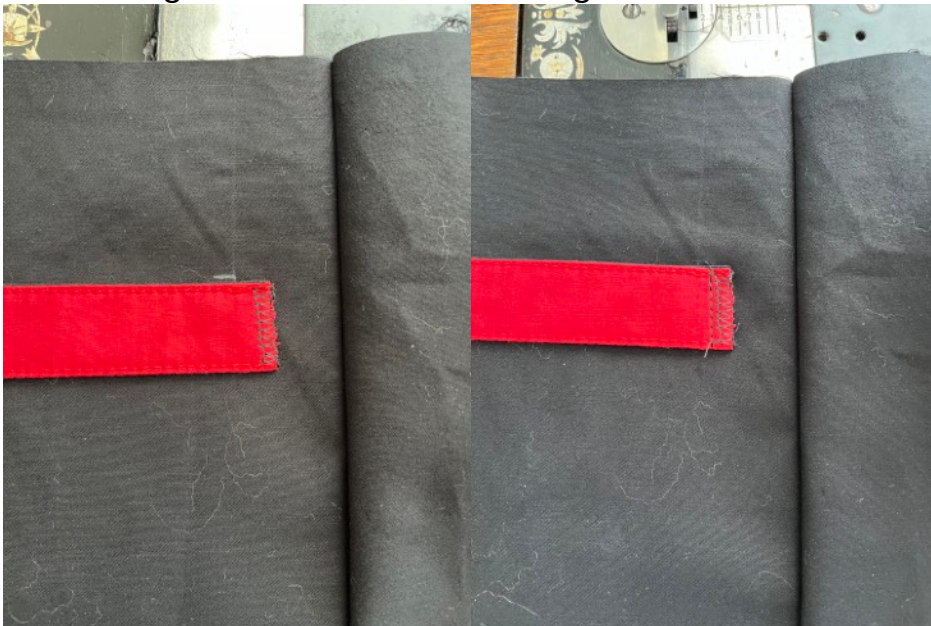
- Serge bottom edge
- Press hem up so you already have the fold line later
- Sew epaulettes to shoulder at markings (centered on the seam. Either my marks were off, or they're all off)
- Match sleeve mark with shoulder seam and sew

### Front of skirt

- Sew pleats to skirt front and then to skirt side fronts



- Sew front skirt straps to skirt front at markings, length toward center, red side up, stitching a little behind the marking



- Fold right sides together and use pins to match up the stitching lines on skirt front and skirt side fronts. Stitch on line, going over the strap extra times



- Open pleats flat, press, and stitch in place at top edge within seam allowance
- Within seam allowance, sew side skirt straps to right side of skirt side fronts at markings, with black side up



### **Back of skirt**

- Sew center back seam
- Press to left and topstitch close to the edge, and 1/4" away from that

### **Attach skirts to bodice**

- Pin right bodice front to skirt front first
- Then pin left bodice front
- Stitch, going over the plackets extra times
- Sew bodice backs to skirt back

### **Side seams**

- Serge each side from sleeve hem to skirt hem
- Sew side seams and press open at the ends (it's only important there for the hems, and the rest of the seam probably won't stay open anyway)

### Hems

- Fold sleeve hem under and topstitch at 1/2"
- press skirt hem up by 1-1/4", then fold the raw edge under and press again
- Topstitch at 1/2"
- Buttons
- Sew black buttons to line up with buttonholes
- Sew clear buttons at placement markings under collar

### Tie

Felt like my brain was melting trying to explain this so I took a lot of pictures.

- Fold tie knot long edge to long edge, right sides together, and stitch
- Turn right side out and press
- Fold widthwise and stitch the raw edge



- Turn so the seam is on the inside and centered and press



- Place Tie Lining and Tie Body right sides together and stitch around the 4 edges of the lining they share (not the one that's in the middle of the tie body, is what I'm trying to say), and clip the corners





- Fold lengthwise with lining on the inside, and stitch the rest of the long side of the tie, not catching the lining



- Turn both parts right side out and press. Now it looks like this.



- Put the pieces like this, with the tie body right side up, and stitch where it'll be just hidden by the knot. It doesn't need to go all the way across, the pieces just have to all be attached.



- Pull the tie body through the knot so the raw edges are inside, and the elastic is sticking out.



- Trim the elastic and finish the ends